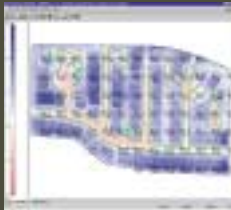
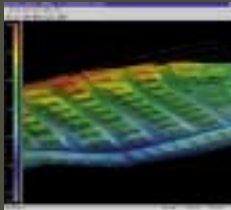


Software
Paydirt Solutions



Paydirt® SiteWork Earthwork Estimating Software



For Contractors Who Are Serious About Dirt



Contractors Serious About Dirt Use Paydirt SiteWork

Easy to Use

Paydirt SiteWork is designed for estimators, not computer experts. If you understand earthwork construction plans, you can use Paydirt. The system is so easy, you can learn to do quantity takeoff in less than one day!

Fast

Most jobs can be taken off in less than one hour! Simply trace your plans and Paydirt SiteWork quickly calculates both the takeoff quantities and the numbers. Time once spent manually calculating cut and fill volumes can be spent bidding more jobs.

Accurate

Paydirt SiteWork's unlimited grid spacing allows you to verify earthwork and material quantities with greater precision than ever before. Your accuracy is further enhanced because Paydirt crunches the numbers for you, eliminating manual calculation errors. The time you save can be focused on verifying takeoff accuracy through Paydirt's detailed graphic and text reports.

Estimating and Digitizing



HCSS

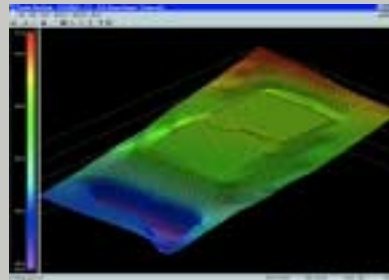
We are proud to partner with HCSS, the leading provider of heavy, highway, and utility estimating software. Seamlessly export quantity information from Paydirt into HCSS to execute accurate estimates that help you win more bids.

GTCO

GTCO manufactures high performance digitizing systems that quickly and accurately automate blueprint measurements. Simply digitize your job site and import the data into Paydirt SiteWork to begin effectively planning your project.

*** Easy to Use * Fast * Accurate * Productive**

3D Views



After tracing your site plan, use 3D Views to check the accuracy of your takeoff. Rotate the view to any angle and zoom in for more detail. 3D Views are also an excellent way to impress and communicate with owners.

Total Volumes reports bank cut/fill and adjusted cut/fill volumes, area of cut, area of fill, and volume of topsoil strip. View the quantities for one drawing or all drawings on a project.

Total Volumes Report

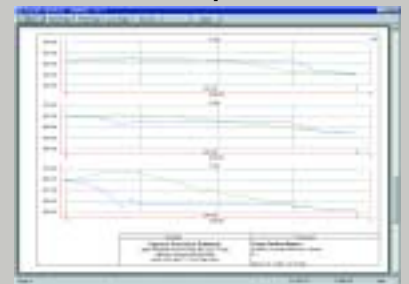
Area	Bank Cut	Bank Fill	Topsoil	Subgrade	Adjusted Cut	Adjusted Fill
Area 1	1000	500	200	100	1300	600
Area 2	2000	1000	400	200	2600	1200
Area 3	500	200	100	50	650	250
Area 4	1500	800	300	150	1950	950
Area 5	3000	1500	600	300	3900	1800
Total	6000	3000	1200	600	8150	3750

Material Summary Report

Material	Quantity	Unit
Asphalt	1000	sq yd
Concrete	500	cu yd
Gravel	200	cu yd
Strip Topsoil	100	cu yd
Subgrade	50	cu yd

The Material Summary report provides boundary, area, volume, and converted quantity information for select materials such as asphalt, concrete, gravel, strip topsoil, etc. This information is reported individually and totaled by group.

Cross-Section Report



Cross-Section reports display surface information for all surfaces, including substrata. Run cross-sections at any interval horizontally or vertically across the site. Or, digitize points for a cross-section or profile of any location.

The more you bid, the more you win, the more you profit!

To Make Money You Need More Than Just Cut and Fill.

In today's fast paced construction market, contractors need to know more than cut and fill volumes for earthwork construction projects. To protect profits, you need to verify existing grades and quantify the impact of inaccurate topographic data. To increase production, you need to know where the dirt is, the square footage of area, the depth of cuts and fills, and how far you need to move the dirt. Paydirt SiteWork 4.0 reduces takeoff time and provides the detailed information you need to effectively plan your site excavation projects.

Detailed Text Reports

display average and maximum depth, area, volume, and center of mass location for individual cut and fill zones.

Cut/Fill Areas Report

Area of Interest Cut/Fill Zone	Area (sq ft)	Average Depth (ft)	Maximum Depth (ft)	Blank Volume (cu yd)	Staked Swath (ft)	Adjusted Volume (cu yd)
Phase 1						
Cut Zone 1	37030.72	1.19	4.75	1927.71	0.00	1927.71
Max. Cut (ft)	1198.83	0.00	0.29	1.41	0.00	0.00
Phase 1: Total Cut	37030.72	1.19	4.75	1927.71	0.00	1927.71
Fill Zone 1	38095.61	1.35	4.00	1949.05	0.00	1949.05
Max. Fill (ft)	216.93	0.01	0.00	0.19	0.00	0.00
Phase 1: Total Fill	38095.61	1.35	4.00	1949.05	0.00	1949.05
Phase 1: Import/Export			Import	219.30	Export	
Phase 2						
Cut Zone 1	34072.40	1.72	4.71	1449.69	0.00	1449.69
Max. Cut (ft)	127.80	0.01	0.00	0.07	0.00	0.00
Phase 2: Total Cut	34072.40	1.72	4.71	1449.69	0.00	1449.69
Fill Zone 1	28990.17	1.24	3.00	1195.67	0.00	1195.67
Max. Fill (ft)	0.06	0.00	0.00	0.00	0.00	0.00
Phase 2: Total Fill	28990.17	1.24	3.00	1195.67	0.00	1195.67
Phase 2: Import/Export			Export	264.08	Export	

Cut/Fill Location Reports

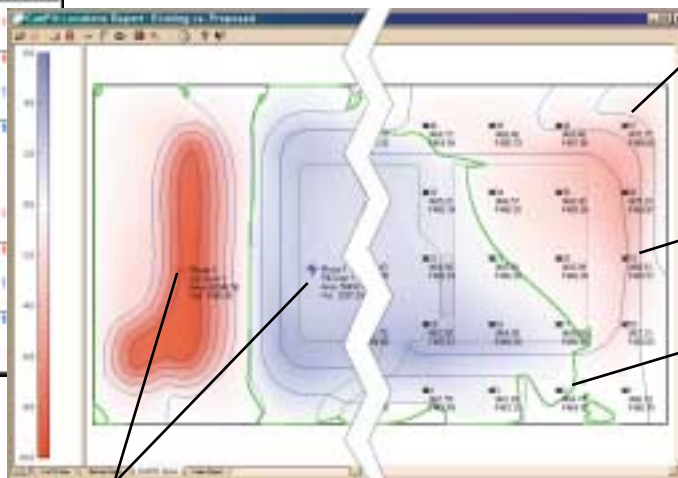
show you the depth and location of cuts and fills, helping you check your takeoff, verify existing grades, plan how to move the dirt and what equipment to use.

Generate Cut Stakes

at any interval to indicate existing and proposed elevations and depth of cut or fill.

Cut/Fill Map

Cut/Fill Map with Stakes



Upload Cut Stakes to Total Stations for site verification & rough grade stakes.

Zero Line indicates transition between cut and fill.

Project Phases

let you view information for the entire project and by project phases.

Determine Haul Paths and Distances

by using the Cut/Fill Areas report to indicate the area, volume, and center of mass for each individual cut and fill area.

Serious About Dirt? You Need Paydirt!

Become a Paydirt "Dirt Dog".

Call 800-235-4972 for more information and a free, on-site, no-obligation demonstration. Ask us about SiteWork Lite, an entry level version of SiteWork, designed for general contractors and start-up excavating firms.



Area & Depth of Cuts & Fills

Determine equipment and production rates for bid.

Individual Cut/Fill Volumes & Center of Mass

Determine most efficient haul paths to increase production.

Import Feature

Import engineering CAD and topographic survey files for faster, easier input.

SiteWork's Offset Line Feature

Build ponds, berms, retaining walls, and layback and backfill models.

Daylight Feature

Automatically tie proposed design to existing ground for increased accuracy at site perimeter.

Site Balance Feature

Determine how much to raise or lower the proposed design to balance cut and fill volumes.

Paydirt SiteWork helps you bid it, build it and get paid for it!

Spectra Precision - From Concept To Completion

Go With The Leader In Construction Solutions.

Spectra Precision is the same company that provides you with top quality lasers, machine control, software, and survey equipment. Our skilled training and support staff, local representation, and long dedication and commitment to the construction industry ensures an excellent return on your product investment. From concept to completion, we deliver solutions that make you profitable today and long into your future.



■ Terramodel® Roadway -

Software designed for heavy highway estimating, survey and stake-out, and job site management. Terramodel Roadway handles roads, streets, multi-lane highways, airstrips, canals, earth dams and more. Detailed reports include phasing and mass haul analysis.

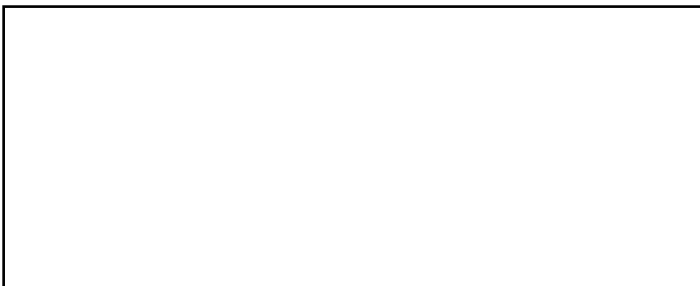
■ Terramodel ConstructionPak -

A complete 3D surface modeling solution for heavy and highway contractors. Upload stakeout data to Total Stations, digitize or import DOT provided cross-section data, and perform project phasing, mass haul analysis, and subgrade material quantity takeoff in one calculation. Provides complete site design capabilities including CAD, COGO, and contouring.

■ Terramodel DesignPak -

A 3D surface modeling software solution for site contractors. Perform quantity verification, track as-built earthwork quantities, and perform total construction layout.

Your Local Dealer Is:



Spectra Precision Software, Inc. 5901 Peachtree-Dunwoody Road, Suite A-300, Atlanta, Georgia 30328-5548
Phone: 800 235-4972 or 770 396-0700, FAX: 770 396-4290. Copyright © 2000 Spectra Precision Software, Inc.
All rights reserved. Paydirt and Terramodel are registered trademarks of Spectra Precision Software, Inc.
All other products and brand names are the property of their respective owners.

■ Terramodel SurveyPak -

Check grade stakes or perform stakeout yourself. Import/export industry leading formats including DWG, DXF, DGN & more. Includes bi-directional transfer with industry leading data collectors, full COGO, ability to automatically generate mapping symbols, drafting labels and custom line types, and ability to create topographic maps using intelligent mapping from the data collector.

■ Paydirt TrenchWork -

Use TrenchWork to calculate pipe lengths, depths, excavation, and backfill quantities by work types, pipe types, and between pipe structures. Produce more accurate bids by calculating depth and quantities based on an actual 3D surface model instead of profile information only.

■ Surveying Instruments -

Contractors can reduce potential down time with surveying instruments from Spectra Precision. We offer a range of total stations and GPS solutions within the Geodimeter® Line, Constructor™ Line, and Zeiss® Elta® Line. Our Robotic total stations enable one person to take care of the entire measurement procedure.

■ Machine Control -

BladePro 3D is a three dimensional automatic grade control system that is revolutionizing construction grading. Allows grading of complex designs such as vertical curves, transitions, super-elevated curves, and complex site designs without stakes, stringlines, or layout. Seamlessly combines Terramodel design software, a Geodimeter robotic total station, and a BladePro motorgrader control system to automatically control the elevation and X-slope of the motorgrader blade anywhere on the site.

Grade Positioning System 3D (GPS3D) uses a real-time kinematic global positioning system, Terramodel digital terrain model, graphic operator interface, and a simple 3-light display to guide the operator to within an inch of desired grade anywhere on the site.

Microsoft® Windows® compatible including Windows 95, 98 and NT!

Paydirt SiteWork - Minimum Recommended Hardware

- Pentium PC or faster
- 32 MB RAM (64 or higher recommended)
- 60 MB hard disk space available
- MS Windows pointing device
- Wintab compatible digitizer
- MS Windows supported Monitor/video card
- 2 serial ports and 1 parallel port



1-800-235-4972

www.spectraprecision.com